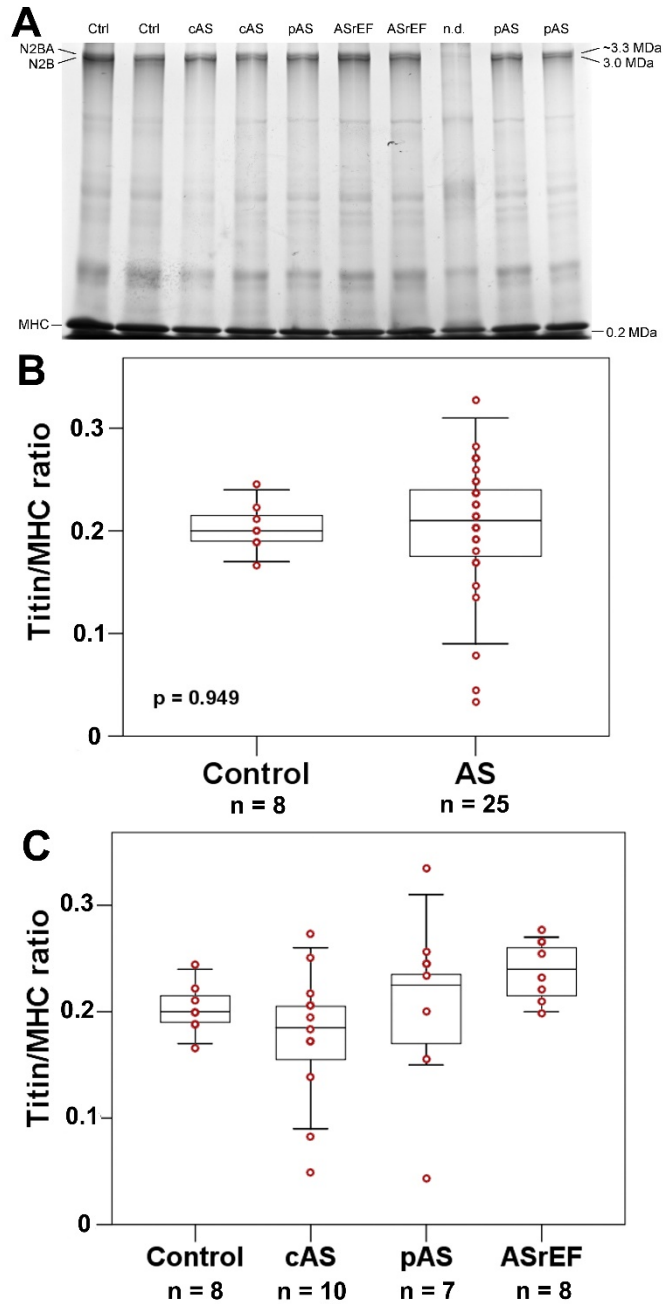


Supplementary Figure 1



Titin to myosin heavy chain (MHC) expression ratio in non-failing donor (Control) and AS patient hearts. *A*, representative 2.5% SDS-polyacrylamide gel showing the titin isoforms and MHC. *B*, and *C*, Summary of results of densitometric analysis of titin and MHC protein expression, demonstrated as Titin/MHC ratio. Shown are box plots (median [1st quartile-3rd quartile) with whiskers and individual data points (red open circles). *B*, Mann-Whitney U test revealed no statistically significant differences between controls and all AS patients ($p = 0.949$). *C*, Comparison was made between AS subgroups using Kruskal-Wallis test, revealing no significant differences. cAS, “classical” AS; pAS, “paradoxical” AS; ASrEF, AS with reduced LV ejection fraction.